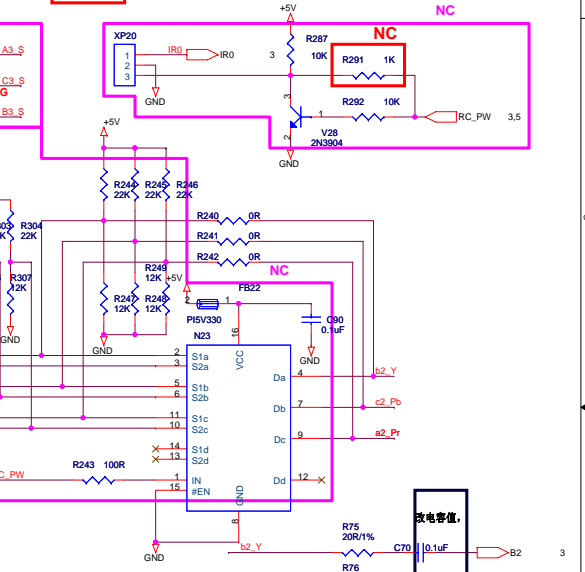
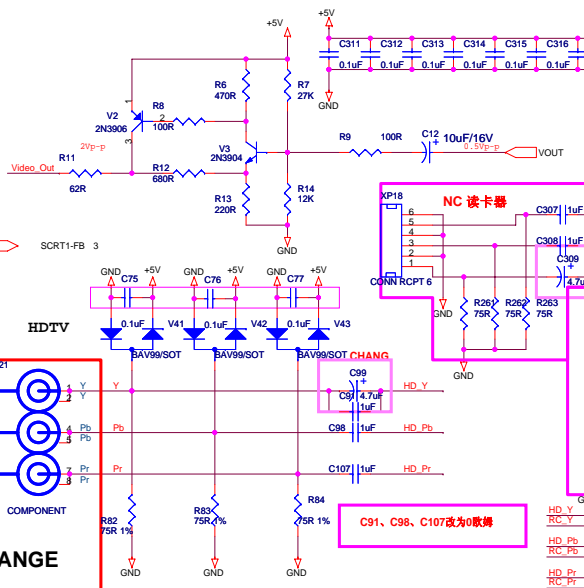
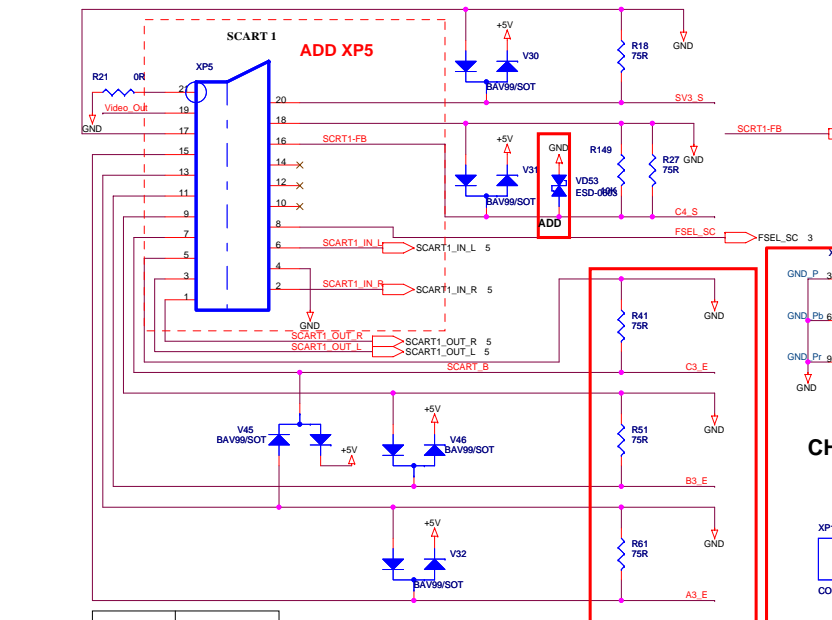
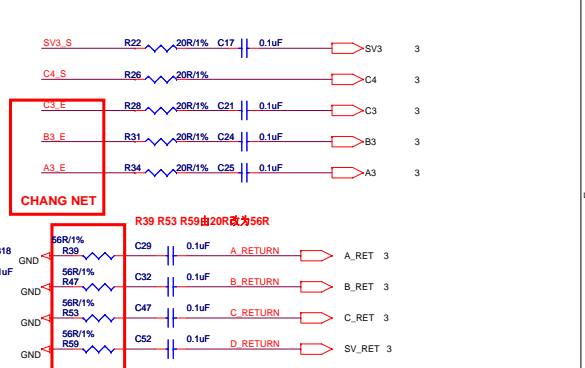
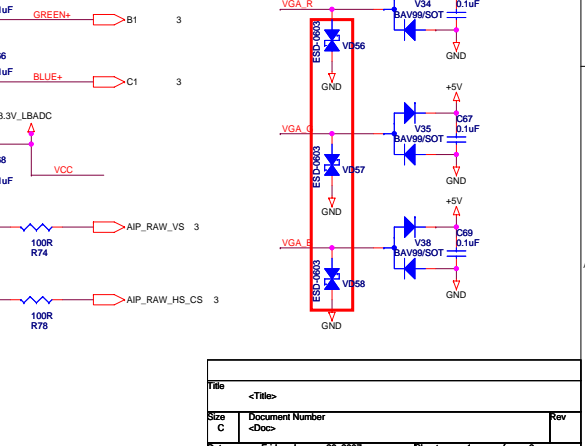
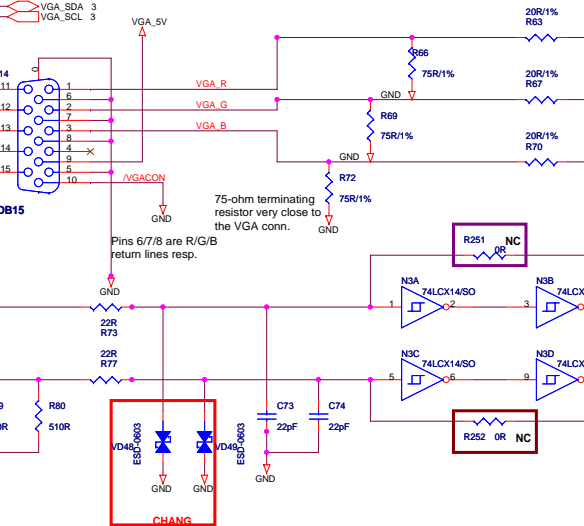
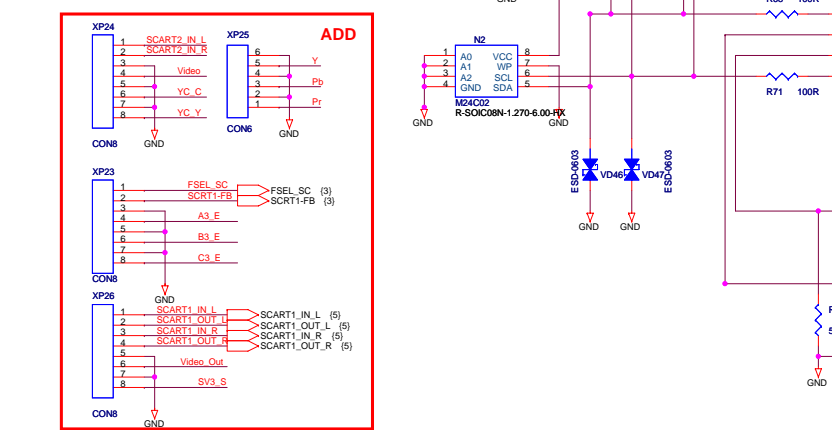
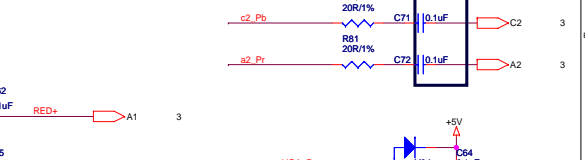
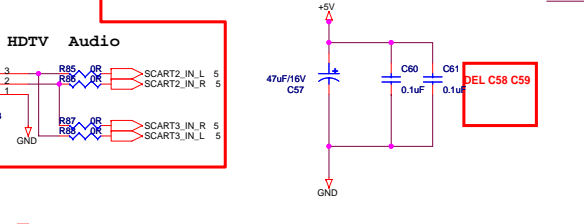


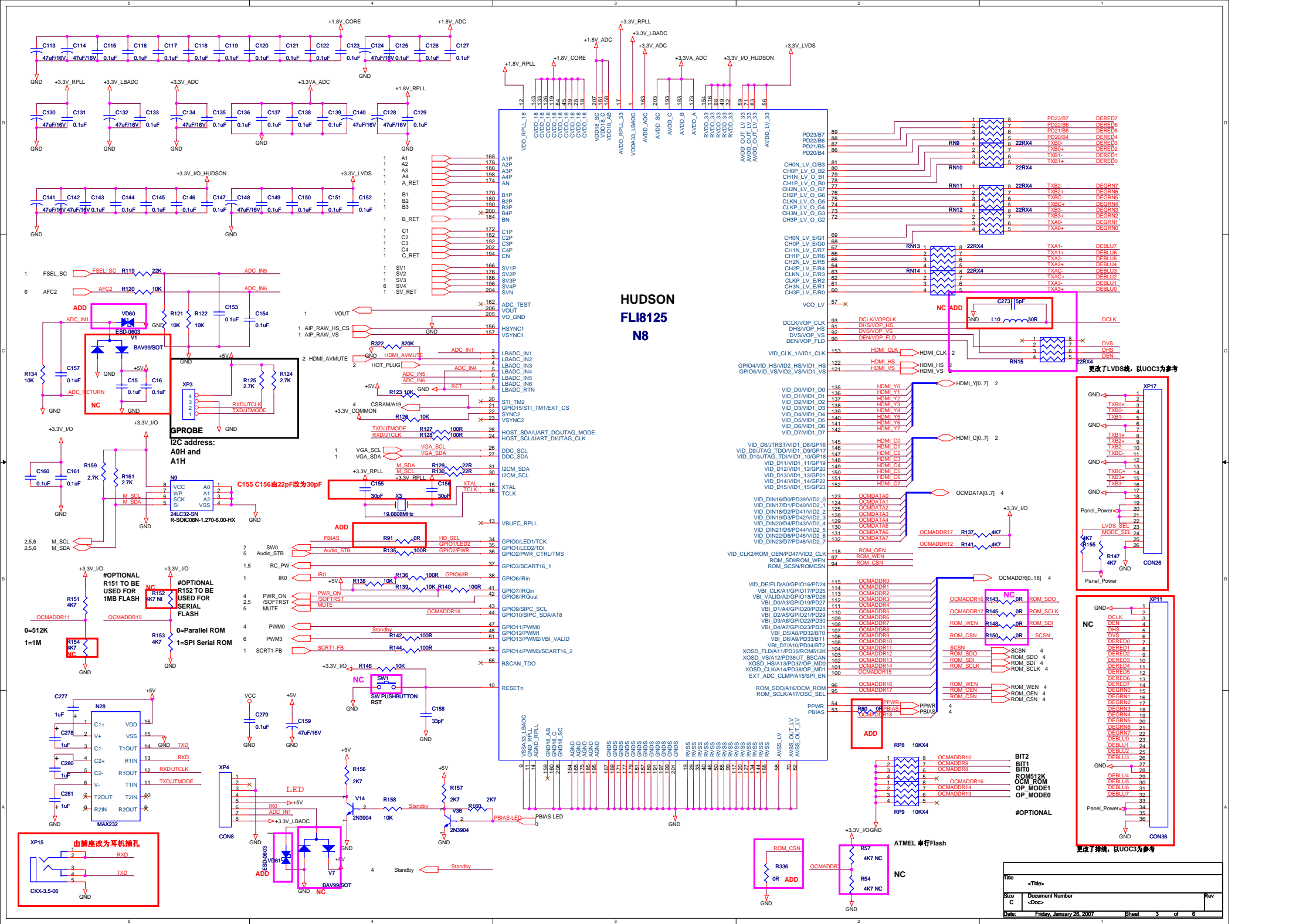
	1	2	3	4
A	GRAPHIC_RED+	HD_Pr	SCART_RED_C	Y/C_C
B	GRAPHIC_GREEN+	HD_Y	SCART_GREEN	
C	GRAPHIC_BLUE+	HD_Pb	SCART_BLUE	SCART_FB
SV	VIDEO	Y/C_Y	SCART_CVBS_Y	TUNER_CVBS1
RET				

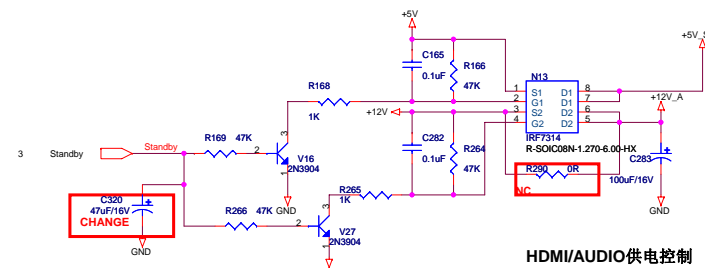


SC-FSEL LEVEL	DESCRIPTION
0V - 2.0V	SCART ABSENT
4.5V - 7.0V	SCART PRESENT 16:9 INPUT
9.5V - 12.0V	SCART PRESENT 4:3 INPUT

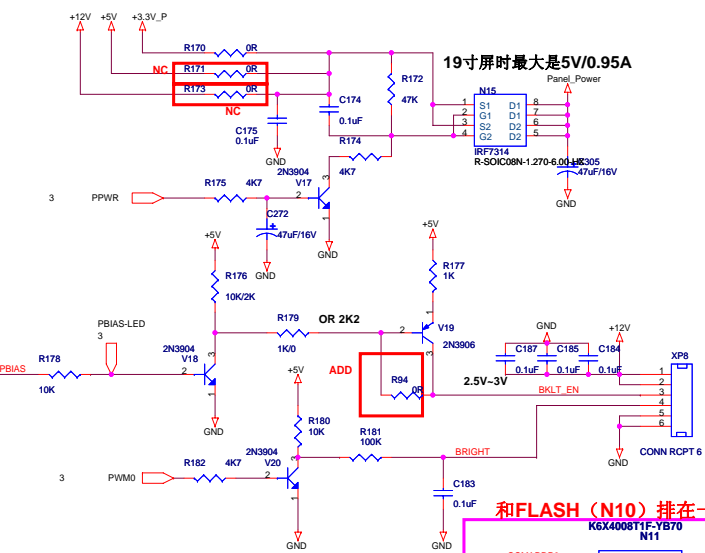


File	<Title>
Size	Document Number
C	<Doc>
Date	Friday, January 26, 2007
Sheet	1 of 6

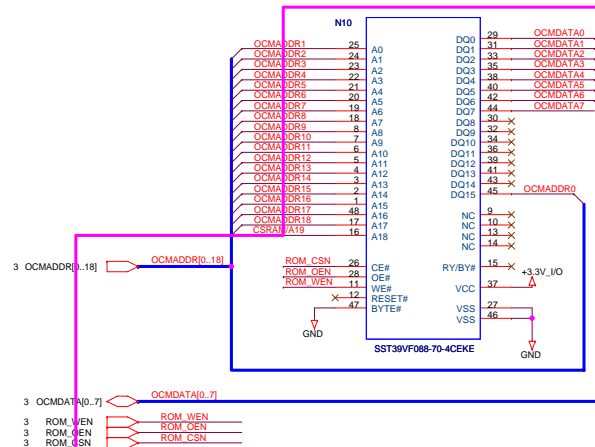
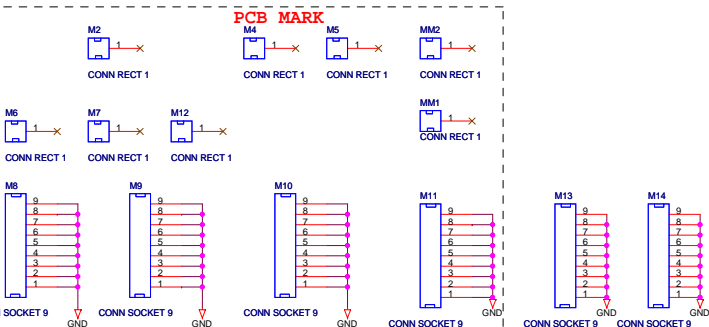
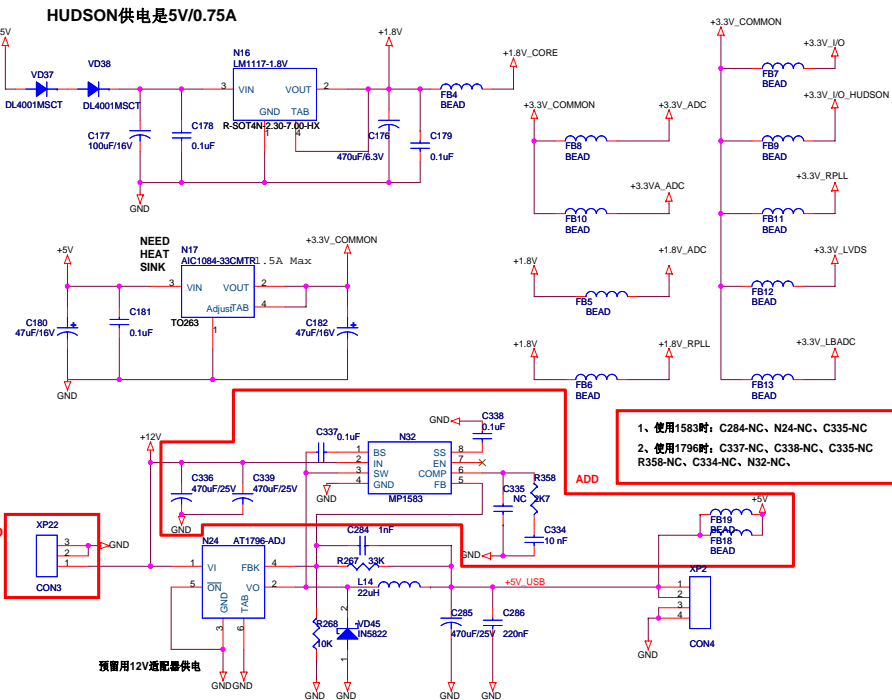
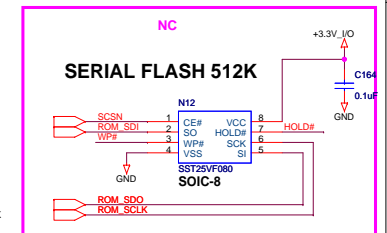
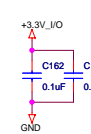
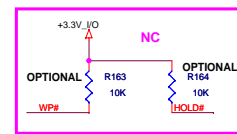
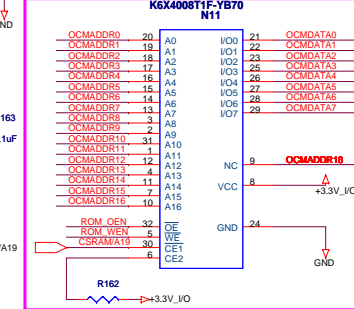


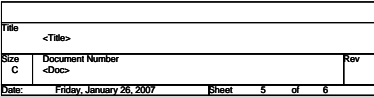


HDMI/AUDIO供电控制



和FLASH (N10) 排在一起，叠加起来





老图: R97-NC R20-10
新图: R17-NC、R20-0、R107-NC

国内机
R23R24=NC D7=0欧姆电阻
R36=NC D6=NC
Q4=NC D8=NC

改善点等
R25—6.8K
R29-2.2K
R48-10
R55-220
R43-27K
R37-20

C39、C40、R40做调整（位置、容值）
目前设置：100K
150K：C40=150p，C39=0.68n，R40=8.2k
160K：C40=150p，C39=0.01u，R40=9.1k

20欧姆变为100欧姆
R37 20R/1% C28 0.1uF

Title			<Title>
Size	Document Number	Rev	
B	<Doc>		
Date:	Tuesday, January 30, 2007	Sheet	6 of 6